

A photograph of a modern building's exterior. The building features a light-colored, textured concrete wall. A dark-framed window is set into the wall, and a large glass door is visible on the right side. The building is situated on a wooden deck, with a green lawn and trees in the background under a clear blue sky.

*iddero*

Home and building  
automation

**PRODUCT GUIDE**

The KNX logo, consisting of the letters 'KNX' in a bold, sans-serif font, with a white arc above the letters.



# Iddero manufactures products for home and building automation based on the KNX standard

KNX is an international standard for home and building control, adopted by hundreds of manufacturers worldwide. The wide range of compatible products allows for optimal configuration of the installation, according to the needs of each particular case.





**Control at your fingertips...**

**...from wherever you are**



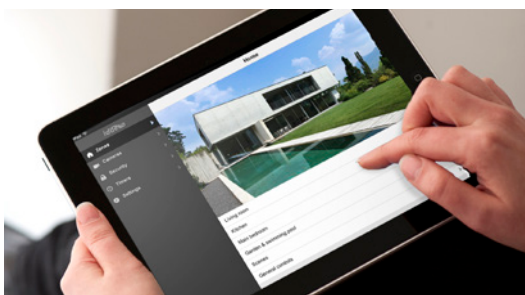


# Discover a system full of advantages and opportunities



## Control and monitoring of KNX installations

- Intuitive, user-friendly visualisation
- Feature-packed: time schedules, scenes, logic functions, alarm monitoring, presence simulation, and much more
- Integrated thermostat function <sup>(1)</sup>
- E-mail and SMS alarms and notifications <sup>(2)</sup>



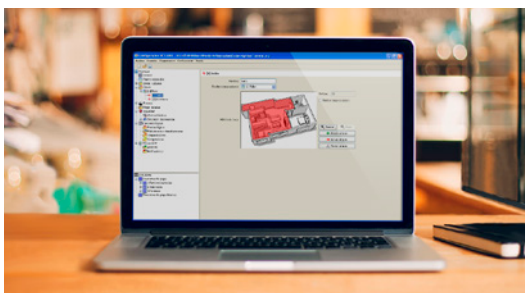
## Integrated web server

- Control your installation from anywhere using your smartphone or tablet (iOS, Android, etc.), or even from your TV. All you need is a supported web browser.
- No additional applications, software, or plug-ins required
- No licensing limits



## Video door phone function

- Video door phone function, compatible with main brands and models of IP-based door phones: Mobotix, 2N, TCS, Behnke, Baudisch, etc.
- High quality video, crystal clear full duplex audio with echo cancellation
- Full integration with KNX: Events can be triggered by incoming calls, door actions, etc.
- IP camera visualisation



## Easy, intuitive configuration

- One single configuration tool for all products
- Create your projects in a matter of minutes, even without actual access to the device
- Import group addresses from ETS
- Upload projects over TCP/IP
- Remote firmware updates



## Robustness and reliability

- Products you can trust
- Specifically designed for home and building automation
- Built for 24/7 operation following the strictest quality guidelines

(1) Temperature probes not included

(2) DW-GSM expansion module required for SMS notifications

# Different options to suit your needs perfectly

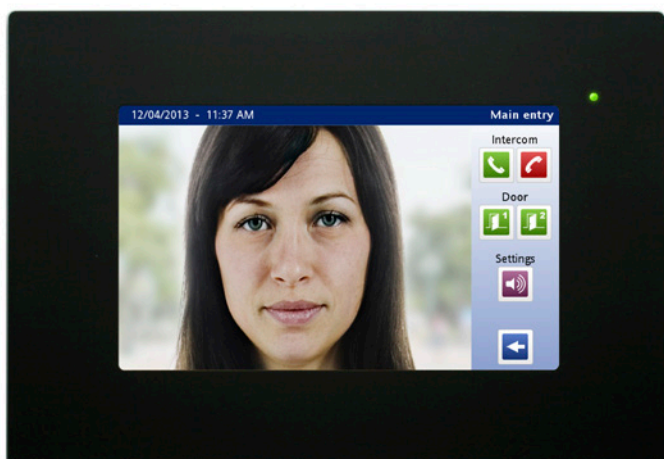


## HC1i-KNX

### 5,7" touch panel with integrated web server

A cost-effective solution for control and monitoring of KNX installations; unbeatable feature to price ratio. Time schedules, scenes, logic functions, alarm monitoring, presence simulation, e-mail notifications, and much more. Control your installation directly through the unit's touch display, or remotely from your smartphone or tablet.

Flush wall mounting.  
Available in several finishes.

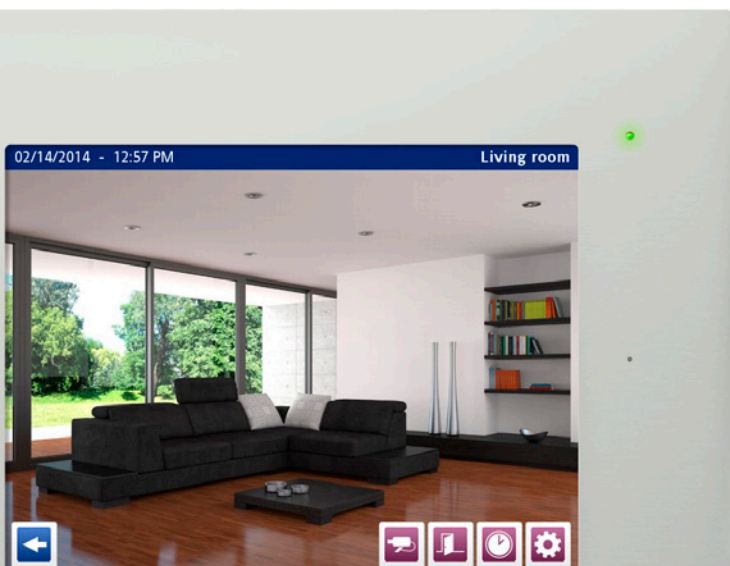


## HC2-KNX

### 7" touch panel with integrated web server and video door phone function

The ideal solution for control and monitoring of KNX installations. Combine the power and flexibility of the Iddero HC1i touch panel with advanced features such as the video door phone and IP camera visualisation and improved performance.

Flush wall mounting.  
Available in several finishes.



## HC2L-KNX

### 10,4" touch panel with integrated web server and video door phone function

Enjoy all the performance and functionality of the Iddero HC2 touch panel, with an enhanced display – more than twice as large – in order to create truly spectacular visualisations.

Flush wall mounting.  
Available in several finishes.

# All the functionality you need for each installation

## Iddero Home Server

**Web server for smartphone or tablet operation**

A complete solution for control and monitoring of KNX installations, with all the functionality you need, and visualisation on any smartphone or tablet. Compact size. Includes 8 multi-function inputs: 4 binary inputs, plus 4 configurable binary or temperature probe inputs.

DIN-rail mounting (6 DIN units)



## DW-GSM

**GSM expansion module**

Control your KNX-based installation from anywhere using SMS messages or through the "missed call" feature. Activate scenes remotely, turn on the heating, or make sure all lights are off. Receive SMS alerts automatically on your mobile phone upon detection of a technical alarm or fault condition. Ideal for second homes without Internet access.

DIN-rail mounting (6 DIN units).  
Compatible with all Iddero touch panels and with Iddero home server.









The logo for iddero, featuring the word "iddero" in a lowercase, sans-serif font. The "i" and "d" are black, the "e" is blue, and the "o" is orange. A blue arc is positioned above the "e" and "o".

**iddero**

A black rectangular box containing white text with the company's address and contact information.

**iddero**  
Av. Juan López Peñalver, 21  
Parque Tecnológico  
de Andalucía  
29590 Málaga (Spain)  
info@iddero.com

A black rectangular box containing orange text indicating ISO 9001 certification.

SGS Quality Certified Company  
ISO 9001 (acreditado por ENAC)

An orange rectangular box containing the company's website address in white text.

[www.iddero.com](http://www.iddero.com)