

# TOP 100 KNX NEW DEVICES AT LIGHT+BUILDING 2012

Futurasmus KNX Group, everything you need to know in one place.



LIGHT+BUILDING  
FRANKFURT AM MAIN  
ABRIL 2012

## LIGHT+BUILDING FRANKFURT 2012

Just as impressive as ever, light+building Frankfurt, the ultimate international fair for KNX professionals, has left some impressions in many ways:

In 2012 the KNX Association has spared no expenses, thus achieving a magnificent presence of our standard. This great impact is the result of a gigantic marketing action including several big size booths, the imposing KNX City, the KNX Awards show, the young KNX generation, hostesses, contests, a juggler, flyers, catalogues, thousands of bags, reporters, a cartoonist, merchandising of products, etc. The directors of the Association were accompanied by the whole team and, together with the members of the national groups and KNX professionals, they have all presented the standard in the best possible light. Excellent job!

As for the KNX manufacturers, their booths were even better than in previous editions and we have seen obvious demonstrations of power (no traces of the euro crisis). Nevertheless, the innovations in the KNX field are not as outstanding as we had expected. The new KNX components are mostly meant to optimize the existing ones regarding functionality, design and/or price. These are very welcome and still we can't help but asking ourselves "has everything been invented yet?"

In any case, there are a lot of interesting products that are worth getting to know. For this reason, the Futurasmus team has wandered through every booth with the KNX flag and even those where this emblem was only visible among an ocean of different systems.

As we did two years ago, here you have our selection of the fair's TOP 100, which we hope are useful and interesting for you. Please, do not hesitate to contact us if you have any enquiry or need a personalized offer.

Warm Greetings from our team,

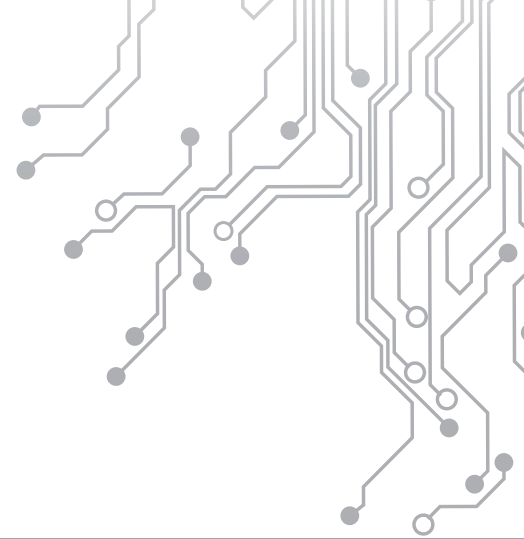
Futurasmus KNX Group

## INDEX

ABB	P. 02
ARCUS	P. 03
BAB-TEC	P. 04
BERKER	P. 05
BUSCH-JAEGER	P. 05
B+B	P. 06
CD INNOVATION	P. 07
CHERRY	P. 07
EELECTRON	P. 08
EGI	P. 09
EIS SOUND	P. 09
EKINEX	P. 10
ELKA	P. 11
ELSNER	P. 12
EMBEDDED SYSTEMS	P. 14
ESYLUX	P. 15
EXOR	P. 16
FUNCTION INNOVATION & TECHNOLOGY	P. 16
GEPRO	P. 17
GEWISS	P. 17
GIRA	P. 18
HAGER	P. 19
HEP	P. 19
HERHOLDT CONTROLS	P. 20
HUGO MÜLLER	P. 20
INGENIUM	P. 21
INTESIS	P. 22
IPAS	P. 24
IT	P. 25
JUNG	P. 26
LINGG&JANKE	P. 26
MDT	P. 27
MERTEN	P. 31
NEWRON SYSTEM	P. 32
ON SEMICONDUCTOR	P. 32
PHILIPS	P. 33
PREUSSEN	P. 33
SIEDLE	P. 33
SIEMENS	P. 35
SOMFY	P. 36
STEINEL	P. 37
TAPKO	P. 38
TCI	P. 38
THEBEN	P. 39
THERMOKON	P. 41
TRIVUM	P. 42
VIMAR	P. 42
WEINZIERL	P. 43
ZENNIO	P. 45
ZÜBLIN	P. 47

# ABB

[www.abb.com](http://www.abb.com)



## DIAGNOSIS SOFTWARE FOR THE NEW KNX RANGE

In the new ABB devices, you can visualize all the information about the status of the device by means of a specific software. This visualization is thought to be exclusively used by the integrator and for diagnosis purposes. To obtain this information it is necessary to have a KNX programmer and to know the physical address of the device.



## ON/OFF ACTUATORS

The new range of ON/OFF actuators from ABB doesn't need additional supply, the outputs stand 16A, C-type charges and also has some application improvements. The manual triggering works even when there is no Bus tension. Regarding the variants, they will be available in 2, 4, 8 and 12 channels, all of them with or without current measuring version.



## BLIND ACTUATORS

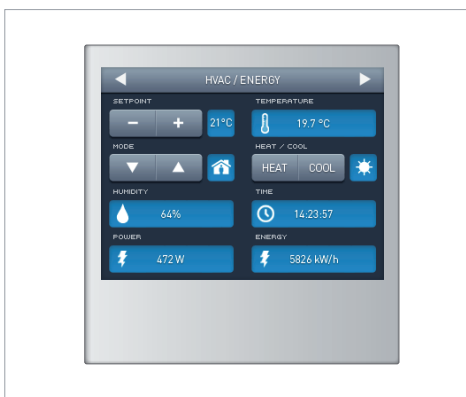
Like the ON/OFF actuators, ABB has also improved the functionality of their blind actuators. These improvements can be found both in the application program and hardware as it doesn't need any additional supply and also has manual triggering independent from the Bus.





#### TOUCH DISPLAY TOUCH\_IT C3, WHITE FRAME

Beside from the new finishes and frame materials, Arcus has added 4 interesting functions to its small but powerful touch display: astronomic clock, integrated monitor of KNX groups, scenes with editable timing for the final user and graphics showing up to 3 elements in each.



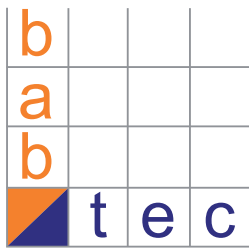
#### TOUCH DISPLAY TOUCH\_IT C3, WHITE FRAME

With a renewed hardware that takes less space, this version of the Touch\_IT display has a new user interface, integrated temperature probe and two binary inputs (a temperature probe can be connected to one of these). Although less customisable than the C3 version, this new display is easier to program and the logic can be made in LUA language (very similar to C) instead of Forth.

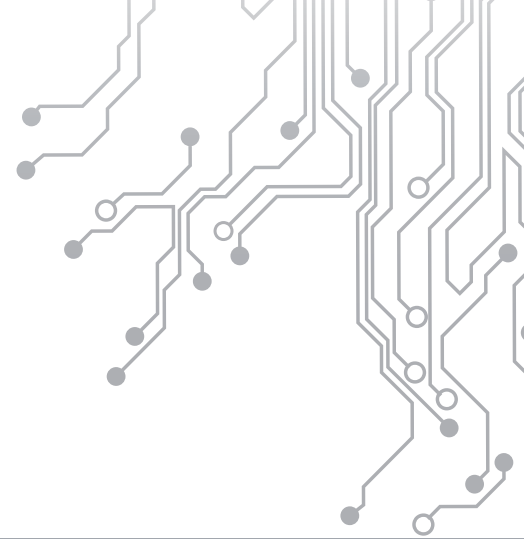


#### M-BUS GATEWAY

Available in DIN rail version or in IP65 box, This gateway with reduced price and size allows the KNX integration of 3 M-Bus meters with 16 data points.



[www.bab-tec.de](http://www.bab-tec.de)



## EIBPORT

The eibPort concept has completely changed with the introduction of the "Cube Vision". After following the steps of a simple Wizard, the eibPort creates a visualization with a three-dimensional cube format. By sliding the finger up and down we are able to change floors and with lateral slides we change rooms. Additionally, it includes thermostat function, integration with twitter (delivery and reception of telegrams), capturing of images from IP cameras, etc.



## EIBPORT 1-WIRE

This new eibPort version includes, besides from KNX, connection to Bus 1-wire by using a USB adapter to 1-wire protocol. This protocol is used for simple applications but its cost is very low. The integration is complete so the values obtained from the Bus 1-wire can be converted to KNX group addresses.

# B.

 [www.berker.de](http://www.berker.de)



## SERIES R.1/R.3, TS SENSOR PUSH BUTTONS

---

Together with the new range of R.1 NAD R.3 mechanisms from Berker, it's been presented a new version of the capacitive TS Sensor push button with rounded edges in order for the aesthetics to be compatible in the same installation. It will be available in black and polar white color and the BCU will be integrated in the push button.



**Busch-Jaeger  
Elektro GmbH**

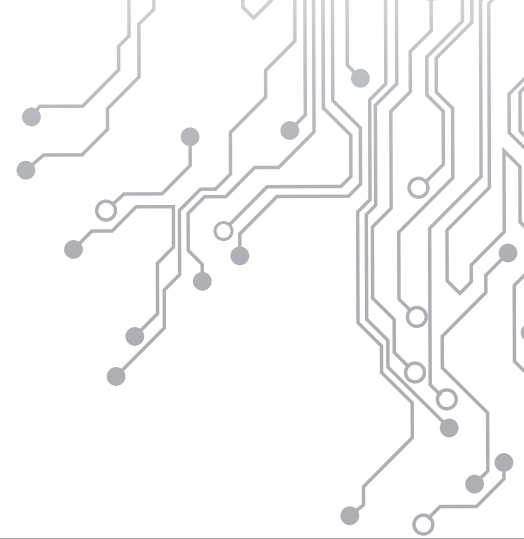
 [www.busch-jaeger.de](http://www.busch-jaeger.de)



## TRITON PUSH BUTTONS

---

Although this push buttons have existed in the KNX market for a long time, some new significant features have been presented. The new versions have integrated BCU and IR receiver. Regarding the functionality, an attempt to make the two keys from each button more independent has been made.



**Busch-Jaeger  
Elektro GmbH**

[www.busch-jaeger.de](http://www.busch-jaeger.de)



#### WALL MOUNTED THERMOSTAT

Especially designed for the commercial sector, this thermostat doesn't have any type of buttons or indication LEDs. Can make two-point, PI or PWM regulation. It also has a specific functionality to control Fan coils. Integrated BCU.



**Automations-und  
Steuerungstechnik GmbH**

[www.bb-steuerungstechnik.de](http://www.bb-steuerungstechnik.de)



#### OPUS GATEWAY

Until now, in order to integrate OPUS system to KNX the solution was to use the Mediatechnic -Gateway (from B+B) by introducing the specific library. Nevertheless the manufacturer has launched into the market an specific gateway for OPUS that allows the control of up to 200 channels and is completely bidirectional.



[www.cdinnovation.com](http://www.cdinnovation.com)

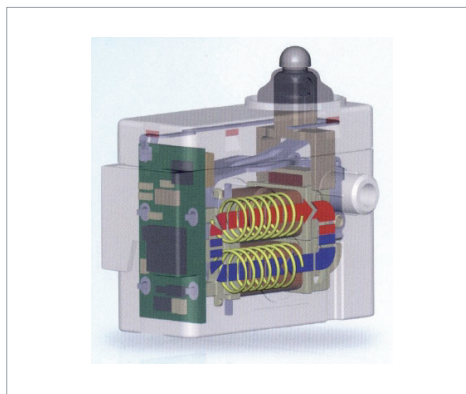


#### APP KNX MASTER

With the release of this free App in the App Store from Apple, the visualization KNX master is now completely compatible in iOS devices (iPhone, iPad, iPod). As it functions as client, it is necessary that in the installation there is a Master Server or a Master Touch Server for its functioning.

**CHERRY**

[www.cherry.de](http://www.cherry.de)



#### KNX RF PUSH BUTTON

This manufacturer of switches is developing a KNX radio-frequency push button, which they assure will function without any type of power supply, similar to the EnOcean technology.



[www.eelectron.com](http://www.eelectron.com)



#### EELECTA PUSH BUTTONS

Now it is possible to completely customize the HomePad push buttons from this Italian manufacturer. For this purpose the manufacturer has published a Web page where you can choose any image to be printed on the push buttons, as well as icons on each key. Additionally there are new key aesthetics, as well as a version of the push buttons called MiniPad with a smaller size.



#### INTERFACE WITH 8 INPUTS/4 OUTPUTS

With wall-mounted format, this device has 8 binary inputs 4 of which can also be used to connect temperature probes, and 4 outputs for LED feeding. 2 of the inputs for temperature probes can also accomplish thermostat operations.



#### WALL-MOUNTED 2 GANG ACTUATOR WITH 2 BINARY INPUTS

Each output can stand up to 6A. The 2 binary inputs can be combined to connect a non KNX movement detector from eelectron, which also has a infra-red receiver to send commands to KNX from an 8-keys remote control



[www.egiaudio.com](http://www.egiaudio.com)



#### DOMOS2 SYSTEM GATEWAY

---

Although in Spain it is already being commercialized since a couple of months. EGi has presented to the rest of Europe the gateway that allows to integrate all the functionality of its DOMOS2 multiroom audio system to KNX. This system allows the distribution of FM radio, analogue audio inputs, USB memory storage of MP3 files, as well as intercommunication between zones or the video-door communicator, and many other functions.

eissOUND

[www.eissound.com](http://www.eissound.com)



#### SERIES I500 MULTIROOM

---

The i500 series stands out mainly for its perfect integration of the iPhone/iPod to all the multiroom system. Additionally, it can distribute FM radio, CD/DVD audio or MP3 and 2 analogue inputs. Thanks to its KNX gateway all of this can be controlled from KNX, even being able to receive in 14bytes values the information related to the song that is being played in the iPod/iPhone at all times.

**ekinex**  
CONTROL YOUR LIVING SPACE

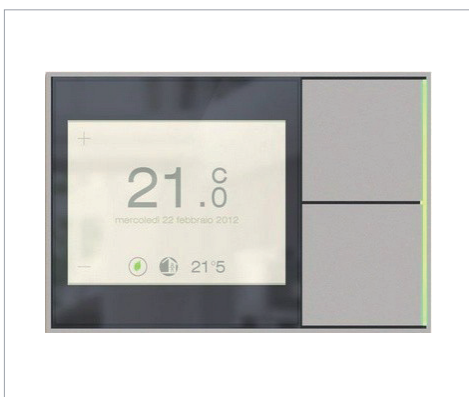
 [www.ekinex.com](http://www.ekinex.com)



#### KNX PUSH BUTTON

---

Although at this moment these are only prototypes, this push buttons in versions of 4 or 6 buttons (8 or 12 functions) will be available in different finishes and colours. The lighting of various state LEDs is visible between the buttons. The manufacturer will provide two different types of frames compatible with this new range of push buttons.



#### KNX RF PUSH BUTTON

---

With the same size of the push button with 4 keys, this touch display will include apart from the standard push button functions, additional functions such as thermostat, graphics, time programming, alarms, etc. It will also be available with 2 right keys, occupying the same space as the push button with 6 keys.



**elka**  
elektronik

 [www.elka.de](http://www.elka.de)



#### DIN RAIL EMBEDDED PC

Powerful PC in DIN rail format designed for manufacturers or hardware developers to use it as a platform for their KNX visualization systems. It has a micro of 1.0 Ghz Dual core, 2GB RAM, 4 GB of memory (expandable to 32 GB), Ethernet connection, DVI output (HDMI can be included), etc. Additionally, it contains 2 KNX BCUs that can be used in parallel to avoid blocking the Bus access when making any type of task.



#### RS-232 GATEWAY

The new bidirectional gateway from ELKA has reduced its size and allows to convert RS-232 chains into KNX telegrams and vice versa. Stands up to 500 RS-232 chains that are freely configurable by the integrator. In the KNX part, it is compatible with any DPT (from 1 bit to 14 bytes) and stands up to 2000 group addresses.



#### PANEL OF PUSH BUTTONS/LEDS

Two main features have been presented related to this control panel: it is now available in black and white colour, and an accessory for surface mounting can be now acquired (until now it could only be wall mounted).

**elsner**<sup>®</sup>  
elektronik

 [www.elsner-elektronik.de](http://www.elsner-elektronik.de)



#### TOUCH ONE STYLE TOUCH DISPLAY

With the name "Style" this is a renewed finish of the Touch One display from Elsner. It differs from the standard version for its crystal frame, which is an extension of the capacitive touch display of its own screen.



#### COLOUR TOUCH DISPLAY

Its a capacitive push button with a 3,5" colour display and great functionality: more than 60 functions, integrated thermostat, shading control, 4 binary inputs or temperature probe, web browser, ect. It has a proximity detector in order to execute an action when approaching the push button (turn on the display, send a KNX telegram, etc.) It also includes RGB back LEDs for lighting controlled by a communication object. Up to 3 can be combined in vertical position.



#### POWER SUPPLIES WITH USB

Two new variants now join the family of power supplies from Elsner its main feature is the introduction of a front mini-USB which allows it to be used as programmer in the ETS. From these two versions, the advanced also has ETS application program with communication objects for errors and the charging state of the Bus as well as functioning information from the power supply.



#### ADVANCED POWER SUPPLY WITH IP ROUTER

---

With the same functionality as the existing power supply with integrated KNXnet/IP Router, the application program of this supply also has the communication objects for diagnosis that are present in the advanced versions: Errors and charge state of the Bus as well as functioning data from the power supply.



#### 4 CHANNEL ACTUATOR WITH BINARY INPUTS

---

This switching actuator, apart from the usual functions, allows to measure the current that is used in each channel. There are two functions depending on the type and number of inputs. The first one has 10 binary inputs of 230VAC. The second one has 12 inputs of 24VDC.

embedded  
systems

 [www.openrb.com](http://www.openrb.com)



#### LOGIC MACHINE 2

---

IP gateway in DIN rail format that apart from being KNX net/IP programmer has: customisable visualization, graphics, logic functions via LUA language, week and annual programmer, telegram log register, etc. It can also work as a multi-protocol gateway to integrate different systems: BACnet, Modbus, Dali, LON, KNX, EnOcean (the last one requires an additional USB antenna or to purchase the EnOcean version), etc.



#### STREAMING PLAYER

---

With the same format as the Logic Machine 2, this component is a network HD audio player controlled from KNX. It can play audio from DLNA servers, UPnP, FTP, Airplay and internet common services like internet radio, LastFM, etc. Incorporates a quality stereo amplifier of 35W per channel.

**ESYLUX** [www.esylux.com](http://www.esylux.com)

#### 280° OUTDOOR DETECTOR

---

Thanks to its articulated support, is suitable for both wall and roof mounting 280° detection field with a range of 20 meters For this, it has 4 sensors: 2 laterals, 1 front and 1 inferior of a higher sensibility with a detection field of 360°.



#### WALL-MOUNTED PRESENCE/ACOUSTIC DETECTOR

---

Although it is wall-mounted, this detector can also capture presence. It also integrates an acoustic sensor that can be used to detect sound instead of presence or a combination of the two. Has LEDs in the lower part for decorative lighting(e.g. corridors).

# EXOR

 [www.exor.de](http://www.exor.de)



## DOMIOP VISULIZATION

Consists of a pack of touch panel (available in different sizes) and a pre-installed visualization software. It can also be controlled from any PC by installing a client software. As main feature, the visualization will be soon available for iPad.



 [www.function.no](http://www.function.no)

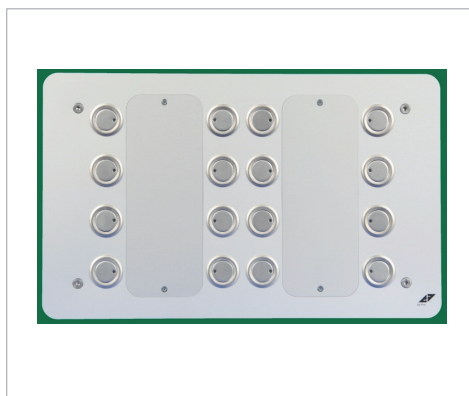


## KNX MULTIFUNCTION PUSH BUTTON

Designed to be installed in hanging luminaires, this controller incorporates apart from the relay to control luminaires, temperature sensor, movement detector, 2 binary inputs, brightness sensor, a pair of keys to control the desired temperature and to control a light or a blind. Based on all these parameters, it is able to automatically make an efficient management of the Lighting in places such as offices.



 [www.eib-tab.de](http://www.eib-tab.de)



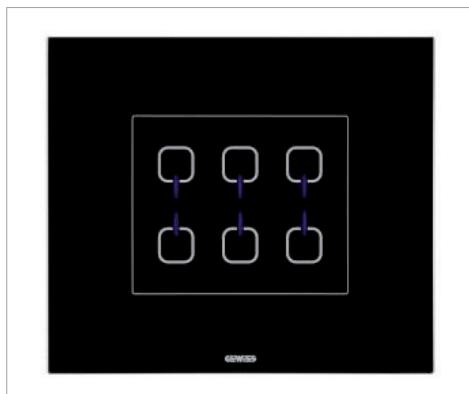
#### KNX-TAB

---

The new version of the KNX-TAB panels from Gepro replenish only from the Bus therefore there is no longer need of additional supply. Additionally the wall-mounting is much simpler and the buzzer (that was optional) is now included in all versions.

**GEWISS**

 [www.gewiss.com](http://www.gewiss.com)



#### TOUCH-MYDESIGN CAPACITIVE PUSH BUTTON

---

This crystal capacitive push button is available with 2, 4 or 6 keys in black, white or aluminium colour. Each key has state LEDs and also a sound that confirms when any of them is pressed. Besides from the normal version to program from the ETS, as a feature they launched a version for Easy-mode installations.

# GIRA

 [www.gira.de](http://www.gira.de)



## CONTROL 9 KNX 9" TOUCH PANEL

---

With a size of 9", WVGA resolution (800x480) and 16.7 millions of colours, this display now has all the functionality of the InfoTerminal Touch, this means: 10 visualization pages (40 functions), alarm management, 20 data point login, logic functions, time programming, scenes, presence simulation, automatic delivery of a-mails, etc. It also has a 1.3 megapixel Web cam integrated.



## HOME SERVER 4

---

At the moment the feature is based only in the hardware, which has been updated to gain more power with a micro of 1.2 GHz and 1 GB RAM. Regarding the functionality, although later on more features will be added, for now only small changes can be observed when customizing texts, colours and symbols, integration of meters in buttons, possibility to establish limits in some functions, etc.

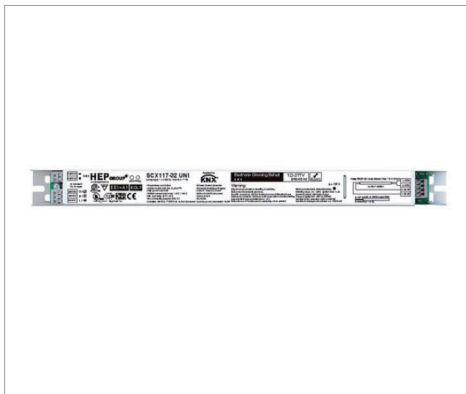


The logo for Hager, featuring a stylized orange and blue icon followed by the word "hager" in a blue, lowercase, sans-serif font. [www.hager.com](http://www.hager.com)

#### RF MEDIA COUPLER

---

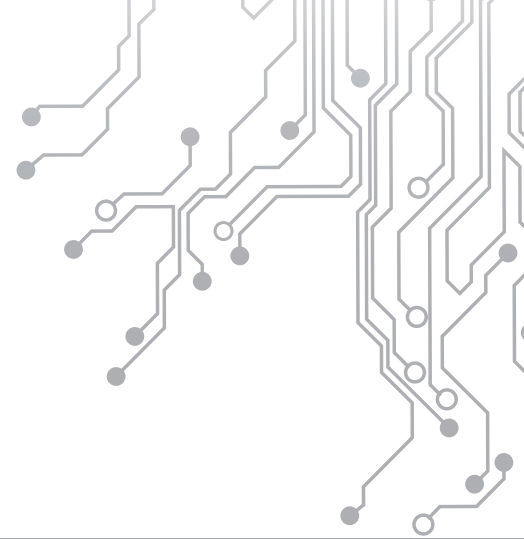
The new media coupler from Hager can communicate in a completely bidirectional way with RF KNX devices. It works like a line coupler, in a way that all the RF KNX devices are part of the same line, different to the one for the TP1 KNX devices. Allows the programming of RF KNX devices from the ETS.

The logo for HEP, consisting of a green, stylized graphic of vertical lines of varying heights, followed by the text "HEP" in red and "ower for light" in red. [www.hepgmbh.de](http://www.hepgmbh.de)

#### KNX BALLAST

---

Instead of having some of the most commonly used connections for fluorescence regulation such as 1-10V or DALI this ballast has a direct connection to KNX. Allows to directly obtain information about failures, current consumption, time counter as well as fix emergency or night mode and other interesting functionalities.



**Herholdt Controls**

[www.hhcontrols.com](http://www.hhcontrols.com)



#### KNX INTERFACE FOR COUNTERS

This Italian manufacturer has a wide range of energy meters, for both direct measure and connection to toroidals, being relevant a new version with IP connection and integrated Webserver allowing to visualize very interesting information. The majority of them have an IR interface on one of the sides, this feature makes it possible to couple this interface to KNX converting them into KNX meters.

**hugomüller**

[www.hugo-mueller.de](http://www.hugo-mueller.de)



#### KNX GPS ANTENNA

This GPS antenna is able to send to the Bus, KNX information about the GPS coordinates, date, time, sun position, temperature and brightness of the point where it is installed.



hugomüller

[www.hugo-mueller.de](http://www.hugo-mueller.de)



#### TIME SWITCH

It has 4 independent channels with a total of up to 300 time schedules that can be annual, weekly, cyclical or by periods, etc. By using its own display and buttons it is very easy to add or modify time schedules, although it can also be done via PC. AGPS or DCF antenna can be connected to receive date and time although it can also be done via KNX Bus and it has an internal battery to keep them in case of lack of power.



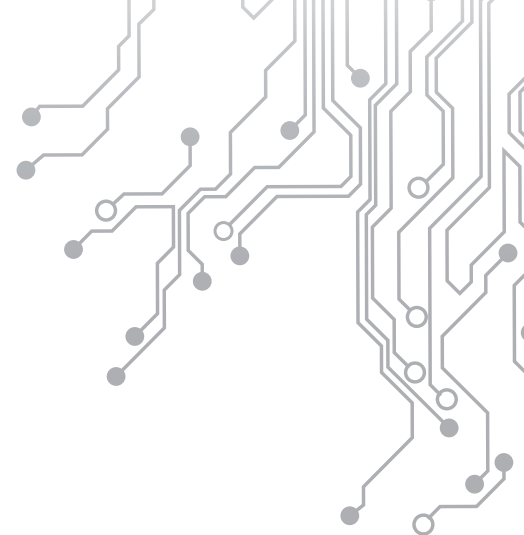
ingenium  
ingeniería y domótica

[www.ingeniumsl.com](http://www.ingeniumsl.com)



#### TEKBUS 4.3" TOUCH PANEL

This display is the transformation to KNX of one of the models that has been commercialized for a long time for BUSing. Allows the control of 16 elements, scenes, weekly time schedules, technical alarms and presence simulation.



**ingenium**  
ingeniería y domótica

[www.ingeniumsl.com](http://www.ingeniumsl.com)



#### CONTROL 7.1 KNX 9" TOUCH PANEL

Once again, this is the KNX version of the already existing PPC7 display of the BUSing system, for this reason its functionality and features are the same but adapted to KNX protocol: 800x480 resolution with 256k colours, customized visualization (up to 6 plans), thermostat function, presence simulation, annual time programmer, control of technical alarms, etc.

**Intesis**  
software

[www.intesis.com](http://www.intesis.com)



#### HOUSEINHAND

The main feature of the new 1.4 version of this KNX installation control App from iOS devices (iPhone, iPod, iPad) is the new license system which considerably reduces costs by allowing to add additional licenses per installation at a much lower price. The resolution has also been adjusted in order to adapt to the retina display of the new iPad.



**Intesis**  
software

 [www.intesis.com](http://www.intesis.com)



#### A/C GATEWAY WITH BINARY INPUTS

---

New versions of gateways in chip format for air conditioning machine from Mitsubishi, Daikin and Panasonic with the same functionality as the previous ones, but they now have 4 free configuration binary inputs. The version with no binary inputs will still be available.



#### ENOCEAN GATEWAY

---

Allows bidirectional communication between EnOcean and KNX devices, needing only KNX bus supply for its functioning. With 253 communication objects it can receive and send orders to the 32 EnOcean channels.



[www.ipas-products.com](http://www.ipas-products.com)



#### DALI GATEWAY

Smaller but more powerful. In only 4U DIN, with web server integrated as its predecessor, with more functions specially thought for the maintenance of the lighting system as well as the management of the emergency lighting. With its 853 communication objects, it allows the complete control of the 64 ballasts and 16 DALI groups, sequences, modes, alarms, etc. At the moment this is without no doubt the most complete DALI/KNX gateway in the market.



#### BACNET GATEWAY

In the BACnet side, it works as server providing the values received from the KNX bus. As it is bidirectional, it can also convert the BACnet bus values into KNX telegrams. It has 250 communication objects between 1 byte and 4 bytes.



#### HOME CONTROL CENTER (HCC)

DIN rail device with Web Server integrated that allows to create KNX graphic visualizations totally customized, as well as logic functions, scenes and editable time schedules for the final user, ect. All based on HTML which makes it compatible with mobile devices such as iPhone and iPad, additionally the manufacturer is now working on a specific visualization that will be automatically generated.



[www.ipas-products.com](http://www.ipas-products.com)



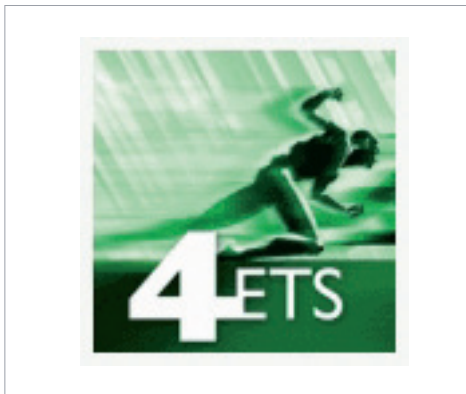
#### COMBRIDGE STUDIO EVOLUTION (CBSE)

---

The new visualization from IPAS stands out for various reasons like its desk and windows system, great customization capacity, intuitive graphic logic module, etc. Additionally it can integrate a complete consumption management module (SmartMetering) as well as an exhaustive Bus DALI management system. The great power of this visualization system makes it suitable for both single-family housing or a great number of offices controlled from a central point. In addition, it works as a multiprotocol gateway connecting different bus types.



[www.it-gmbh.de](http://www.it-gmbh.de)



#### APP RECONSTRUCTOR

---

The well-known additional tool for ETS3 that allows to read the programming that has been downloaded to the KNX devices in an installation and to visualize this in the ETS, will also be available for ETS4 in App format. In order to use it we will have to wait for version 4.1 of the ETS4 in which it will be possible to use Apps.

# JUNG

[www.jung.de](http://www.jung.de)



## KNX SMART-CONTROL PUSH BUTTON

With a similar style to current Smartphones, is a capacitive push button that allows the control of the basic elements of an installation. It has additional functions like weather information or editable time schedules in a very intuitive way. The control and browsing through the menus is made by sliding, very similar to the one used in iPhones.

# Lingg & Janke

[www.lingg-janke.de](http://www.lingg-janke.de)




## 4 GANG DIMMING ACTUATOR

This new version of the current dimming actuator from Lingg&Janke has been designed to perfectly adapt its regulation curve to the types of lighting more frequently found: LED bulbs and also low consumption. Although it has automatic detection of the type of connected charge, some DIP switches in the front-side of the device allows to indicate the specific type of charge in order to optimize its regulation curve. In addition, each channel works as a small KNX energy meter.



## Lingg & Janke

 [www.lingg-janke.de](http://www.lingg-janke.de)



### INTERFACES FOR COUNTERS

---

It was very clear that Lingg&Janke is now focused in the development of products for consumption management from KNX. They presented all types of interfaces for counters from various manufacturers for electricity, water, gas and even heat meters, and their intention is to continue expanding the number of interfaces to the point where any type of counter can be integrated to KNX.

**MDT**<sup>®</sup>  
Gebäude  
Automation

 [www.mdt.de](http://www.mdt.de)



### PRESENCE DETECTORS

---

Although they have a very similar shape compared to the previous versions, these are two completely new detectors. One of them contains 4 pyroelectric sensors, while the other, with smaller dimensions contains 3 pyroelectric sensors. Both can make constant light regulation.

**MDT**<sup>®</sup>  
Gebäude  
Automation

 [www.mdt.de](http://www.mdt.de)



#### MINI PRESENCE DETECTOR

---

With a size of less than 5 cm and only one pyroelectric sensor, is capable of detecting presence and movement at a range of 4 to 6 meters in diameter.



#### BRIGHTNESS SENSOR

---

Has the same format and reduced size as the mini presence detector, but instead of the pyroelectric sensor it contains a brightness sensor that allows to send recent brightness values to the Bus and also constant light regulation.



#### LINE COUPLER

---

With the introduction of the KNX line coupler to its catalogue, MDT has completely covered the range of "KNX basic" components.

**MDT**<sup>®</sup>  
Gebäude  
Automation

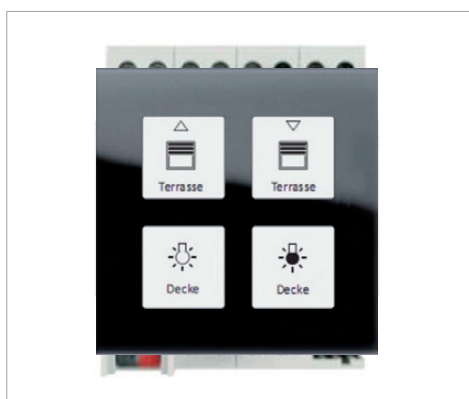
 [www.mdt.de](http://www.mdt.de)



#### WEATHER STATION

---

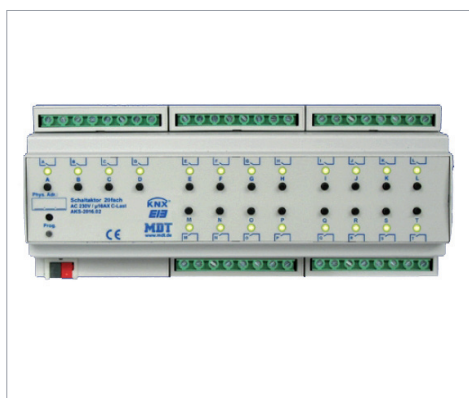
Provides the Bus with temperature, wind, brightness values (distinguishing between south, east and west) as well as rain indications, thresholds, etc. Doesn't need additional power supply because it feeds only from the Bus.



#### CRYSTAL CAPACITIVE PUSH BUTTON

---

Available with 4 and 8 keys, each of which has a red/white LED with customized functions. It also has back white LEDs. The labels can be easily removed and customized. The temperature sensor can be integrated optionally. It is also available in RF KNX, which includes 4 binary outputs of 10A.



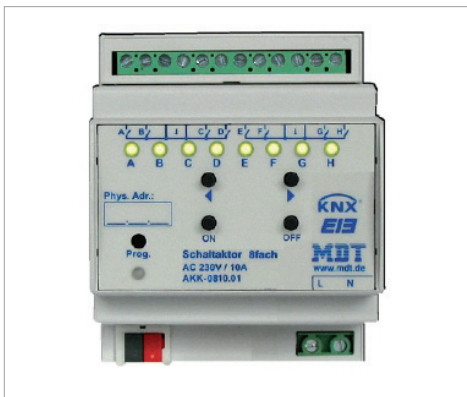
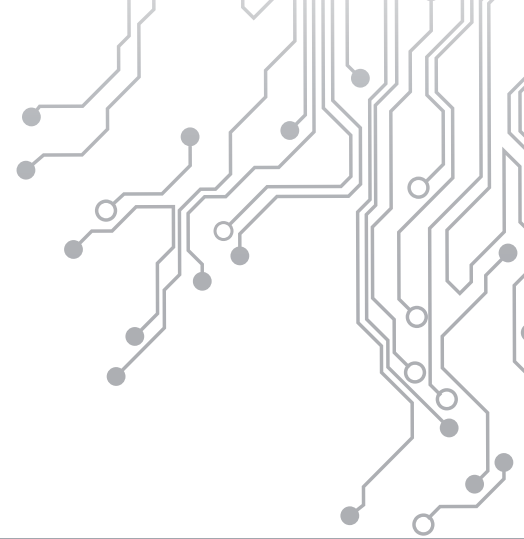
#### 20 GANG ON/OFF ACTUATOR, 12U

---

In only 12 DIN units, this actuator has 20 type C outputs of 16A with an independent phase for each and manual triggering.

**MDT**<sup>®</sup>  
Gebäude  
Automation

 [www.mdt.de](http://www.mdt.de)



#### UNIVERSAL ACTUATOR

This new range of actuators allows the configuration of each pair of outputs as 2 ON/OFF channels or a blind channel, independent to the configuration of the rest of the outputs. 2 versions available with 8 or 16 outputs, both of 16A per gang and manual triggering.



#### MULTIMEDIA GATEWAY

Wall mounted KNX to RS232 gateway. Initially available with the integrated protocol for Loewe televisions and K8 receivers from T+A, in the future it will be able to manually introduce the RS232 chains from the ETS in order to adapt it to any protocol.

# merten

 [www.merten.de](http://www.merten.de)



## BASIC SERIES ACTUATORS

---

Unlike the usual, in this case the feature of this range of actuators consists in a reduction of the functionality (such as the elimination of the current detection). The main goal of this reduction is to lower the price, making them more competitive in cases where no special functionality is needed.



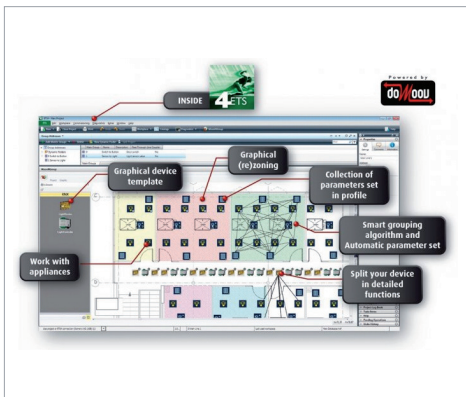
## UNIQU TOUCH VISUALIZATION

---

The new visualization from Merten is located in an embedded PC to connect to a PC or a touch panel. This manufacturer also offers its own range of compatible touch panels of 7", 10", 15" or 19" with frames in different colours. Apart from the KNX visualization with additional elements such as graphics, it allows the integration of video-door communication systems, IP cameras, VoIP phone service, visualization from smartphones, etc.



[www.newron-system.com](http://www.newron-system.com)



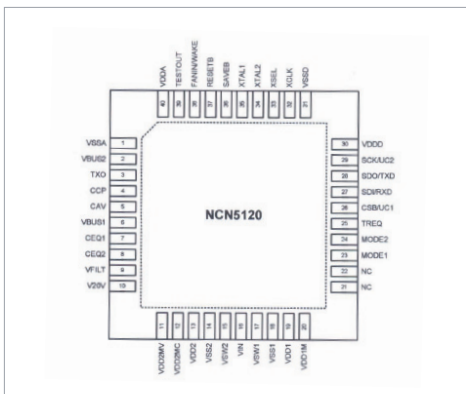
### MOOV'N'GROUP

By using this App for ETS4 it is possible to configure a common KNX installation via a graphic interface. After defining some of the components that will be used you just need to insert the installation plan, define the different zones, add the elements of each zone and graphically link.



**ON Semiconductor**

[www.onsemi.com](http://www.onsemi.com)



### KNX NCN5120 TRANSCEIVER

This transceiver for TP1 KNX involves a new implementation of the physical layers and link to KNX protocol. It can provide the hardware between 3.3VDC and 21VDC for its power supply, with a consumption of up to 100mA. All this comes integrated in a single chip with QFN40 encapsulated.

# PHILIPS

[www.philips.com](http://www.philips.com)



## DALI GATEWAY

---

With its DALI gateway, this multinational company makes its entrance to KNX. Apart from controlling the 64 ballasts of the DALI Bus it has a binary output and other diagnosis functions such as lamp-ballast failure warning, emergency lighting test, operating hours counter, etc.

 **preussen**  
automation

[www.preussen-automation.eu](http://www.preussen-automation.eu)



## MOVEMENT + TEMPERATURE DETECTOR

---

Apart from detecting movement and measuring brightness like any conventional detector, this detector also measures temperature. Incorporates two binary inputs for technical alarms and customisable logic functions that depend of the three measured parameters.



[www.preussen-automation.eu](http://www.preussen-automation.eu)



#### 1600W DIMMERS

Range of universal dimming actuators with different number of channels (1, 2, 4 or 6) all of them with the same total power 1600W distributed within the number of channels.



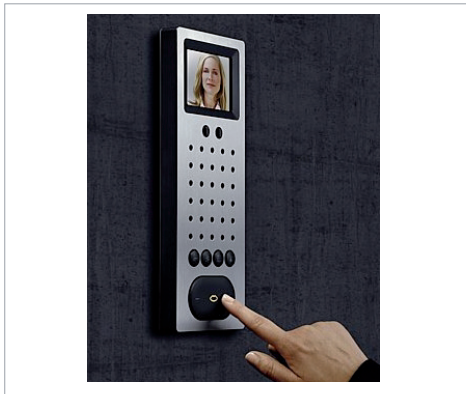
#### PUSH BUTTONS

New push buttons of 2 or 4 phases (4 or 8 keys). Each button has its own state LED. Keys with different standard imprints can be ordered. These push buttons additionally have integrated IR receivers. In the future, a version with display and integrated thermostat will also be available.



# SSS SIEDLE

[www.siedle.be](http://www.siedle.be)



## VIDEO-DOOR COMMUNICATOR WITH PUSH BUTTON

This well-known manufacturer of intercommunication systems will launch into the market on its video-door communicators with 4 additional keys with KNX functionality. As it doesn't integrate a TP1 KNX BCU, telegrams will be sent via KNXnet/IP protocol.

# SIEMENS

[www.siemens.com](http://www.siemens.com)



## KNX POWER SUPPLIES

The new KNX power supplies from Siemens are the first ones in which two of them can be connected in the same line without the need of keeping a minimum distance of 200 meters. The only requirement is that both supplies have the same power.

The Somfy logo is displayed in a bold, orange, lowercase sans-serif font. [www.somfy.com](http://www.somfy.com)

#### RF MODULE FOR BLIND ACTUATORS

---

The RF module that can be adjusted to the blind actuators from Somfy and allows the control of its channels by using the RF remote control from Somfy, it also allows to send telegrams to the KNX Bus from the same remote control instead of an exclusive use for blinds.



#### ANIMEO MASTER CONTROL WEATHER STATION

---

This station can be purchased with or without wind direction sensor, or even by pieces in order to choose only the needed sensors (Brightness, wind direction, rain, temperature,..). It also has a software from which current values can be visualized in a graphic and simple way as well as adjusting the different thresholds and operation logic.

**STEINEL**<sup>®</sup>  
German Quality

 [www.steinel.de](http://www.steinel.de)



#### QUATTRO SLIM IR PRESENCE DETECTOR

---

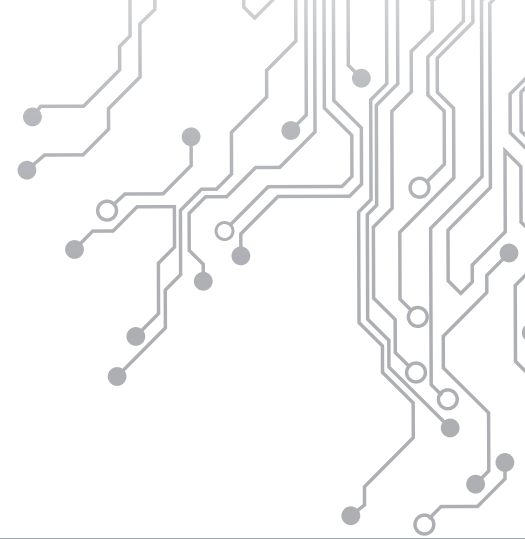
The new presence detector from Steinel uses a new technology of hexagonal lens from Fresnel which apart from giving a flat pattern that improves its appearance one installed also allow the detection of smaller movements. As it is not based on beams like other detectors, its capacity to detect is not reduced when walking towards the detector.



#### SENSIQS OUTDOOR MOVEMENT DETECTOR

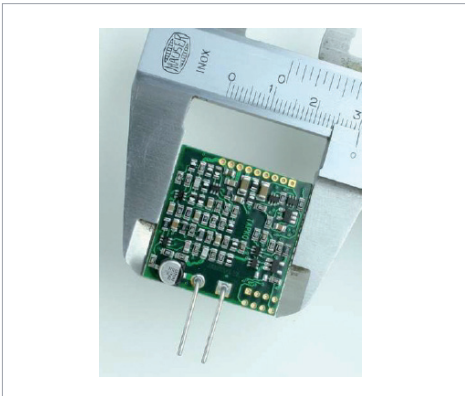
---

Besides the sensor that confirms the movement under the detector, it has 3 sensors for frontal and side detection. The range of detection of each sensor can be adjusted independently from the rest, and also the ETS application has independent communication objects for each sensor in order to recognize in which part movement has been detected. As an option they offer a support for mounting on corners.



**TAPKO**  
TECHNOLOGIES GMBH

 [www.tapko.de](http://www.tapko.de)



#### KNX NCN5120 TRANSCEIVER

---

This new KNX transceiver is a more effective implementation of the physical KNX layer than the FZE, because with a lower price it can supply the hardware that feeds from the Bus up to 480mW for its possible applications.

**tci**

 [www.tci.de](http://www.tci.de)



#### ANDROID TOUCH PANEL

---

Keeping the appearance of the Amena range of panels, this version includes Android 4.0 as operating system, this feature allows the use of many KNX control Apps from multiple manufacturers and also any available application from the Android market: Audio and video players, e-mail, facebook, twitter, etc.

The logo for TCI, consisting of the lowercase letters 'tci' in a bold, blue, sans-serif font. [www.tci.de](http://www.tci.de)

#### CAPACITIVE VERSION OF THE MURA PANELS

---

The most successful range of panels from the manufacturer TCI will also be available with crystal capacitive and multi-touch panel. Also, the "Push-to-Talk" button for the integration of video door communication will be replaced by the "Hands Free" system. It will be available in 10", 16" as well as 22" for those who search a panel with great quality and dimensions.

The logo for Theben, consisting of the lowercase letters 'theben' in a bold, blue, sans-serif font. [www.theben.de](http://www.theben.de)

#### METEODATA 140GPS KNX WEATHER STATION

---

It has wind sensor (capable of measuring horizontal and vertical wind). 3 brightness sensors, rain indication, temperature measure and GOS receiver which apart from giving date and time can calculate the position of the sun. This allows the automatic control of the panel position. The Bus connection is made on a mounting base, as a result the installation of the station is very simple.

# theben

 [www.theben.de](http://www.theben.de)



## MIX2 SERIES

With the new MIX2 series it is possible to connect different types of slave actuators to any type of master (previously both master and slaves had to be the same). For example, a dimming master can have ON/OFF or blind slaves connected.



## AMPLIFIER FOR MIX2 DIMMING ACTUATOR

The DMB1T accessory can now be connected to the MIX2 dimming actuators. Takes 1U DIN and for each installed the power increases in 400W, allowing to regulate LED type and low consumption charges up to a maximum of 2000W. As the modules are independent this allows the use of different types of charges in each DMB1T even when all of them are connected to the same MIX2 dimmer.



## LUNA 134 BRIGHTNESS SENSOR

This new version of the classic Luna brightness sensor now has 100 channels. Up to 3 brightness probes can be connected. It has display and buttons to adjust/modify some parameters like thresholds, delays, etc.

**thermokon**<sup>®</sup>  
Keep in touch with the future

 [www.thermokon.de](http://www.thermokon.de)



#### CAPACITIVE PUSH BUTTON WITH INFORMATION DISPLAY

The KNX push button from Thermokon has integrated thermostat and via its capacitive display 3 pages can be browsed for the control of KNX elements. It is available in two versions: only display, or with 8 additional keys in the lower part (also capacitive) in order to have direct access to the most important functions.

**trivum**<sup>®</sup>

 [www.trivum.de](http://www.trivum.de)



#### KNXNET/IP MULTIROOM MODULE

Each of these modules represents a zone of the KNX audio system. Integrates a amplified stereo output of 40 Watts and has 3 audio sources: FM radio, Internet radio and Streaming (for example from any UPnP or DLNA server, or Stream analog signal convertor). To control it from KNX TP1 a KNXnet/IP router is needed.

# trivum®

[www.trivum.de](http://www.trivum.de)



## TRIVUM TOUCHPAD

Color touch display for the control of Trivum multiroom and other KNX installations. Shows all the information of the current sound source (including track lists, record labels, ect), IP cameras, etc. A single display can control all audio zones. To be integrated in KNX it needs a KNXnet/IP router and it has a specific page where the KNX elements to be controlled can be customized.

# VIMAR

[www.vimar.com](http://www.vimar.com)



## WELL-CONTACT PLUS TOUCH PUSH BUTTON

By means of this touch push button with colour display, you can browse within different control pages, each of which has up to 8 elements. It also includes thermostat function although it doesn't have temperature probe, for this reason it must be sent from an external KNX sensor.



# WEINZIERL

 [www.weinzierl.de](http://www.weinzierl.de)



## RF/KNX PUSH BUTTON

---

For surface mounting, this gateway allows bidirectional communication between TP1 KNX components and RF KNX components. It will also allow the programming of RF KNX components from TP1 KNX (awaiting for the ETS4 to have this functionality).



## USB PROGRAMMER IN STICK FORMAT

---

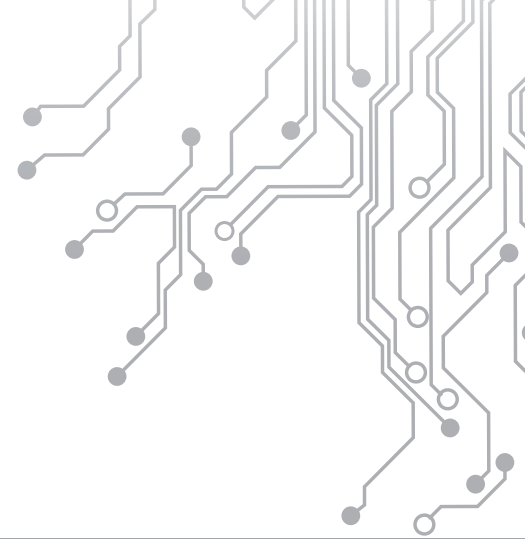
With the same functionality as any conventional USB programmer for ETS, all the electronic has been reduced to the size of an USB stick. For this reason, it is ideal for using as the programmer that is taken together with the laptop to all the installations.



## 750 KNXNET/IP ROUTER

---

Just like the rest of the IP gateways, Weinzierl is going to upgrade its IP Routers so that they can stand up to 5 simultaneous tunnelling connections.



# WEINZIERL

 [www.weinzierl.de](http://www.weinzierl.de)



## ENO 630 ENOCEAN GATEWAY

---

Unlike the the current versions ENO 610 and 620, this new gateway from Weinzierl allows the bidirectional communication with EnOcean devices. This means that apart from receiving data from EnOcean sensors and push buttons, we can actuate from KNX devices over EnOcean elements such as actuators.



## USB PROGRAMMER

---

With the same features as the current USB programmer this new version takes only 1U DIN.



## RS-232 PROGRAMMER

---

Just like the previous USB programmer, this module takes only 1U DIN and includes a RS-232 programmer with FT1.2 KNX protocol.





#### Z41 DISPLAY

Seen by most as the older sister of the prestigious Z38, it has a color panel of capacitive crystal. Initially its functionality will be similar to the Z38 with some improvements: 2 more elements per page, optimization of some pages to facilitate its use, different layouts, etc. With next firmware upgrades its functionality will grow significantly and its IP connectivity will allow to visualize IP cameras, Squeeze box control, etc.



#### TOUCH-MYDESIGN CAPACITIVE PUSH BUTTON

Crystal capacitive push button with 4, 6 or 8 keys and the possibility of horizontal or vertical installation. Apart from the keys, a zone is reserved at the end to modify the desired temperature in a very simple way by sliding the finger over it. Completely customisable with a Zennio software that allows to request the push button with the printed images you wish.



#### ZAS PUSH BUTTON

Although this push buttons has been for some time in the market, a new application program has been introduced which considerably widens its power. The top arrows are useful to change between 4 different pages, where the 8 buttons behave in different ways depending on the current page. Also, its binary inputs can be now used to connect movement detectors from Zennio.


 [www.zennio.com](http://www.zennio.com)


#### MAXINBOX8 MULTIFUNCTION ACTUATOR

The same functionality and characteristics as the Maxinbox16 but with only 8 gangs and taking 4 DIN units: Each pair of outputs can be used as 2 ON/OFF or 1 blind independent from the rest, the outputs can stand 16A and Type C charges, manual triggering, independent logic functions of the actuator, etc.



#### KES ENERGY METER

Wall mounted triphasic energy meter (or 3 monophasic circuits) with the size of a push button interface. Simple installation, only by surrounding with the clip the cable which we desire to measure. Additionally to the electric consumption information, it gives CO2 emission calculations and cost estimations.

**Züblin** [www.zublin.ch](http://www.zublin.ch)

#### HOKUSPOKUS PRESENCE DETECTOR

---

Despite its reduced size (less than 5cm) it has 2 pyro-electric sensors that allows to detect presence. In addition, the application program has 3 channels and can regulate constant light . The detection range can be easily adjusted between 8 and 14 meters by sliding the sensor up or down. When the sensor is up (detection range of 8 meters), the detector looks totally flat.



#### PRESENCE DETECTORS

---

Until now, the range of ceiling presence detectors from the manufacturer Züblin only has square shape in order to adapt to the Swiss market (country where the manufacturer comes from). Due to its growth and expansion to the rest of Europe they have extended their range with new versions where the square shape has been replaced with the typical rounded pattern The functionality stays the same.



**futurasmus**  
KNX GROUP

**Futurasmus SL.**

C/ de la Nit 1, Las torres de Bonalba. B7 - L1

03110 - Mutxamel (Alicante)

[info@futurasmus-knxgroup.es](mailto:info@futurasmus-knxgroup.es)